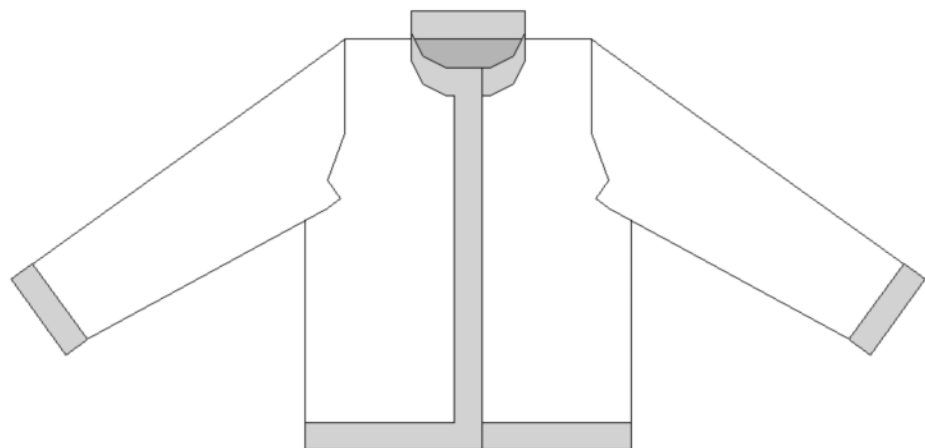


7-year-old cardigan Machine Knitting SK280



ANINO OGUNJOBI

Watch the Step by Step Video Tutorial on AninoTV YouTube from designing the garment in DesignAKnit(DAK8) to machine knitting the cardigan.

Designing cardigan for a 7-year-old using Designaknit software DAK8:
<https://youtu.be/AWdBo-EB5t0>

7 year old cardigan on SK280 Knitting Machine Part 1:
<https://youtu.be/euVC4MIXhpk>

7 year old cardigan on SK280 Knitting Machine Part 2:
<https://youtu.be/UsLm3vQk8Oc>

***For mock-rib, remember to duplicate the numbers of rows to knit for welt.**

Main Tensions 27.03 Stitches & 45.45 Rows per 10 cm

Welt, Cuff, and Neckband Tensions 27.03 Stitches & 45.45 Rows per 10 cm

Tension dial setting or needle sizes

Tension 8 SK280

Notes about this shape file

Stockinet Stitch

100% Acrylic double knit, plain colours

Garment type :Cardigan (Female)
 Sleeve type :Set-in
 Neck style - front :Round
 Neck style - back :Straight

To fit Chest : 65.0 cm + ease 6.5 cm
 To fit Waist or hip : 70.0 cm + ease 1.5 cm
 To fit Nape to garment length : 45.0 cm + ease 0.0 cm
 To fit Arm length : 43.9 cm + ease 0.0 cm
 To fit Upper arm : 19.6 cm + ease 6.5 cm
 To fit Wrist : 13.0 cm + ease 7.5 cm
 To fit Shoulder to shoulder : 25.9 cm + ease 1.0 cm
 To fit Arm hole depth : 14.0 cm + ease 1.5 cm

Main Tensions 27.03 Stitches & 45.45 Rows per 10 cm
 Welt, Cuff, and Neckband Tensions 27.03 Stitches & 45.45 Rows per 10 cm

Tension dial setting or needle sizes

Tension 8 SK280

Notes about this shape file

Stockinet

100% Acrylic double knit, plain colours

Robin by Thomas B Ramsden

Cast on LN48..RN48.

Knit 18 rows of welt (4.0cm).

If necessary, knit an additional row to put carriage at right.

Set RC to 0.

HORIZONTALLY RIBBED NECKBAND:

RIB SECTION	DIMENSIONS	INSTRUCTION
-------------	------------	-------------

LEFT SIDE	39.0 x 3.0	Pick up 105 stitches + knit 14 rows welt.
-----------	------------	---

LEFT FRONT NECK	8.8 x 3.0	Pick up 24 stitches + knit 14 rows welt.
-----------------	-----------	--

BACK NECK	12.4 x 3.0	Pick up 34 stitches + knit 14 rows welt.
-----------	------------	--

RIGHT FRONT NECK	8.8 x 3.0	Pick up 23 stitches + knit 14 rows welt.
------------------	-----------	--

RIGHT SIDE	39.0 x 3.0	Pick up 106 stitches + knit 14 rows welt.
------------	------------	---

	=====	=====
TOTALS	108.0	292

BACK OF CARDIGAN

7 year old cardigan sk280 / (96s x 186r)

Cast on LN48..RN48.

Knit 18 rows of welt (4.0cm).

If necessary, knit an additional row to put carriage at right.

Set RC to 0.

Cast on 96

R1: K96.

Rows 2-116: As row 1.

When knitting the next row: Dec 6 sts at right.

R117: K90.

When knitting the next row: Dec 6 sts at left.

R118: K84.

R119: As row 118 (without the shaping).

When knitting the next row: Dec 1 sts at left, Dec 1 sts at right.

R120: K82.

Rows 121-123: As row 120 (without the shaping).

When knitting the next row: Dec 1 sts at left, Dec 1 sts at right.

R124: K80.

Rows 125-127: As row 124 (without the shaping).

When knitting the next row: Dec 1 sts at left, Dec 1 sts at right.

R128: K78.

BACK OF CARDIGAN continues...

Rows 129-131: As row 128 (without the shaping).

When knitting the next row: Dec 1 sts at left, Dec 1 sts at right.

R132: K76.

Rows 133-135: As row 132 (without the shaping).

When knitting the next row: Dec 1 sts at left, Dec 1 sts at right.

R136: K74.

Rows 137-139: As row 136 (without the shaping).

When knitting the next row: Dec 1 sts at left, Dec 1 sts at right.

R140: K72.

Rows 141-186: As row 140 (without the shaping).

Cast off remainder. End of piece.

FRONT RIGHT OF CARDIGAN

7 year old cardigan sk280 / (44s x 186r)

Cast on LN22..RN22.

Knit 18 rows of welt (4.0cm).

If necessary, knit an additional row to put carriage at right.

Set RC to 0.

Cast on 44

R1:K44.

Rows 2-117: As row 1.

When knitting the next row: Dec 7 sts at left.

R118: K37.

Rows 119-120: As row 118 (without the shaping).

When knitting the next row: Dec 1 sts at left.

R121: K36.

Rows 122-124: As row 121 (without the shaping).

When knitting the next row: Dec 1 sts at left.

R125: K35.

Rows 126-129: As row 125 (without the shaping).

When knitting the next row: Dec 1 sts at left.

R130: K34.

Rows 131-134: As row 130 (without the shaping).

When knitting the next row: Dec 1 sts at left.

R135: K33.

Rows 136-139: As row 135 (without the shaping).

When knitting the next row: Dec 1 sts at left.

R140: K32.

FRONT RIGHT OF CARDIGAN continues...

Rows 141-158: As row 140 (without the shaping).

When knitting the next row: Dec 3 sts at right.

R159: K29.

R160: As row 159 (without the shaping).

When knitting the next row: Dec 2 sts at right.

R161: K27.

R162: As row 161 (without the shaping).

When knitting the next row: Dec 2 sts at right.

R163: K25.

R164: As row 163 (without the shaping).

When knitting the next row: Dec 2 sts at right.

R165: K23.

Rows 166-167: As row 165 (without the shaping).

When knitting the next row: Dec 1 sts at right.

R168: K22.

R169: As row 168 (without the shaping).

When knitting the next row: Dec 1 sts at right.

R170: K21.

Rows 171-172: As row 170 (without the shaping).

When knitting the next row: Dec 1 sts at right.

R173: K20.

Rows 174-175: As row 173 (without the shaping).

When knitting the next row: Dec 1 sts at right.

R176: K19.

Rows 177-186: As row 176 (without the shaping).

Cast off remainder. End of piece.

FRONT LEFT OF CARDIGAN

7 year old cardigan sk280 / (44s x 186r)

Cast on LN22..RN22.

Knit 18 rows of welt (4.0cm).

If necessary, knit an additional row to put carriage at right.

Set RC to 0.

Cast on 44

R1:K44.

Rows 2-116: As row 1.

When knitting the next row: Dec 7 sts at right.

R117: K37.

Rows 118-120: As row 117 (without the shaping).

When knitting the next row: Dec 1 sts at right.

R121: K36.

Rows 122-124: As row 121 (without the shaping).

When knitting the next row: Dec 1 sts at right.

R125: K35.

Rows 126-129: As row 125 (without the shaping).

When knitting the next row: Dec 1 sts at right.

R130: K34.

Rows 131-134: As row 130 (without the shaping).

When knitting the next row: Dec 1 sts at right.

R135: K33.

Rows 136-139: As row 135 (without the shaping).

When knitting the next row: Dec 1 sts at right.

R140: K32.

Rows 141-159: As row 140 (without the shaping).

When knitting the next row: Dec 3 sts at left.

FRONT LEFT OF CARDIGAN CONTINUES...

R160: K29.

R161: As row 160 (without the shaping).

When knitting the next row: Dec 2 sts at left.

R162: K27.

R163: As row 162 (without the shaping).

When knitting the next row: Dec 2 sts at left.

R164: K25.

R165: As row 164 (without the shaping).

When knitting the next row: Dec 2 sts at left.

R166: K23.

R167: As row 166 (without the shaping).

When knitting the next row: Dec 1 sts at left.

R168: K22.

R169: As row 168 (without the shaping).

When knitting the next row: Dec 1 sts at left.

R170: K21.

Rows 171-172: As row 170 (without the shaping).

When knitting the next row: Dec 1 sts at left.

R173: K20.

Rows 174-175: As row 173 (without the shaping).

When knitting the next row: Dec 1 sts at left.

R176: K19.

Rows 177-186: As row 176 (without the shaping).

Cast off remainder. End of piece.

LEFT SLEEVE

7 year old cardigan sk280 / (70s x 191r)

Cast on LN28..RN28.

Knit 14 rows of welt (3.0cm).

If necessary, knit an additional row to put carriage at right.

Set RC to 0.

Cast on 56

R1: K56.

Rows 2-19: As row 1.

When knitting the next row: Inc 1 sts at left, Inc 1 sts at right.

R20: K58.

Rows 21-38: As row 20 (without the shaping).

When knitting the next row: Inc 1 sts at left, Inc 1 sts at right.

R39: K60.

Rows 40-57: As row 39 (without the shaping).

When knitting the next row: Inc 1 sts at left, Inc 1 sts at right.

R58: K62.

Rows 59-76: As row 58 (without the shaping).

When knitting the next row: Inc 1 sts at left, Inc 1 sts at right.

R77: K64.

Rows 78-95: As row 77 (without the shaping).

When knitting the next row: Inc 1 sts at left, Inc 1 sts at right.

R96: K66.

Rows 97-114: As row 96 (without the shaping).

When knitting the next row: Inc 1 sts at left, Inc 1 sts at right.

R115:K68.

Rows 116-133: As row 115 (without the shaping).

When knitting the next row: Inc 1 sts at left, Inc 1 sts at right.

R134:K70.

Rows 135-141: As row 134 (without the shaping).

When knitting the next row: Dec 6 sts at left.

LEFT SLEEVE continues

R142: K64.

When knitting the next row: Dec 6 sts at right.

R143: K58.

When knitting the next row: Dec 1 sts at left, Dec 1 sts at right.

R144: K56.

R145: As row 144 (without the shaping).

When knitting the next row: Dec 1 sts at left, Dec 1 sts at right.

R146: K54.

R147: As row 146 (without the shaping).

When knitting the next row: Dec 1 sts at left, Dec 1 sts at right.

R148: K52.

R149: As row 148 (without the shaping).

When knitting the next row: Dec 1 sts at left, Dec 1 sts at right.

R150: K50.

R151: As row 150 (without the shaping).

When knitting the next row: Dec 1 sts at left, Dec 1 sts at right.

R152: K48.

Rows 153-154: As row 152 (without the shaping).

When knitting the next row: Dec 1 sts at left, Dec 1 sts at right.

R155: K46.

Rows 156-158: As row 155 (without the shaping).

When knitting the next row: Dec 1 sts at left, Dec 1 sts at right.

R159: K44.

Rows 160-162: As row 159 (without the shaping).

When knitting the next row: Dec 1 sts at left, Dec 1 sts at right.

R163: K42.

Rows 164-166: As row 163 (without the shaping).

When knitting the next row: Dec 1 sts at left, Dec 1 sts at right.

R167: K40.

Rows 168-170: As row 167 (without the shaping).

When knitting the next row: Dec 1 sts at left, Dec 1 sts at right.

R171: K38.

Rows 172-173: As row 171 (without the shaping).

When knitting the next row: Dec 1 sts at left, Dec 1 sts at right.

R174: K36.

LEFT SLEEVE continues...

Rows 175-176: As row 174 (without the shaping).

When knitting the next row: Dec 1 sts at left, Dec 1 sts at right.

R177: K34.

Rows 178-179: As row 177 (without the shaping).

When knitting the next row: Dec 1 sts at left, Dec 1 sts at right.

R180: K32.

R181: As row 180 (without the shaping).

When knitting the next row: Dec 1 sts at left, Dec 1 sts at right.

R182: K30.

R183: As row 182 (without the shaping).

When knitting the next row: Dec 1 sts at left, Dec 1 sts at right.

R184: K28.

R185: As row 184 (without the shaping).

When knitting the next row: Dec 1 sts at left, Dec 1 sts at right.

R186: K26.

R187: As row 186 (without the shaping).

When knitting the next row: Dec 1 sts at left, Dec 1 sts at right.

R188: K24.

R189: As row 188 (without the shaping).

When knitting the next row: Dec 1 sts at left, Dec 1 sts at right.

R190: K22.

R191: As row 190 (without the shaping).

Cast off remainder. End of piece.

RIGHT SLEEVE

7 year old cardigan sk280 / (70s x 191r)

Cast on LN28..RN28.

Knit 14 rows of welt (3.0cm).

If necessary, knit an additional row to put carriage at right.

Set RC to 0.

Cast on 56

R1: K56.

Rows 2-19: As row 1.

When knitting the next row: Inc 1 sts at left, Inc 1 sts at right.

R20: K58.

Rows 21-38: As row 20 (without the shaping).

When knitting the next row: Inc 1 sts at left, Inc 1 sts at right.

R39: K60.

Rows 40-57: As row 39 (without the shaping).

When knitting the next row: Inc 1 sts at left, Inc 1 sts at right.

R58: K62.

Rows 59-76: As row 58 (without the shaping).

When knitting the next row: Inc 1 sts at left, Inc 1 sts at right.

R77: K64.

Rows 78-95: As row 77 (without the shaping).

When knitting the next row: Inc 1 sts at left, Inc 1 sts at right.

R96: K66.

Rows 97-114: As row 96 (without the shaping).

When knitting the next row: Inc 1 sts at left, Inc 1 sts at right.

R115: K68.

Rows 116-133: As row 115 (without the shaping).

When knitting the next row: Inc 1 sts at left, Inc 1 sts at right.

R134: K70.

RIGHT SLEEVE continues...

Rows 135-141: As row 134 (without the shaping).

When knitting the next row: Dec 6 sts at left.

R142: K64.

When knitting the next row: Dec 6 sts at right.

R143: K58.

When knitting the next row: Dec 1 sts at left, Dec 1 sts at right.

R144: K56.

R145: As row 144 (without the shaping).

When knitting the next row: Dec 1 sts at left, Dec 1 sts at right.

R146: K54.

R147: As row 146 (without the shaping).

When knitting the next row: Dec 1 sts at left, Dec 1 sts at right.

R148: K52.

R149: As row 148 (without the shaping).

When knitting the next row: Dec 1 sts at left, Dec 1 sts at right.

R150: K50.

R151: As row 150 (without the shaping).

When knitting the next row: Dec 1 sts at left, Dec 1 sts at right.

R152: K48.

Rows 153-154: As row 152 (without the shaping).

When knitting the next row: Dec 1 sts at left, Dec 1 sts at right.

R155:K46.

Rows 156-158: As row 155 (without the shaping).

When knitting the next row: Dec 1 sts at left, Dec 1 sts at right.

R159:K44.

Rows 160-162: As row 159 (without the shaping).

When knitting the next row: Dec 1 sts at left, Dec 1 sts at right.

R163:K42.

Rows 164-166: As row 163 (without the shaping).

When knitting the next row: Dec 1 sts at left, Dec 1 sts at right.

R167:K40.

RIGHT SLEEVE continues...

Rows 168-170: As row 167 (without the shaping).

When knitting the next row: Dec 1 sts at left, Dec 1 sts at right.

R171:K38.

Rows 172-173: As row 171 (without the shaping).

When knitting the next row: Dec 1 sts at left, Dec 1 sts at right.

R174:K36.

Rows 175-176: As row 174 (without the shaping).

When knitting the next row: Dec 1 sts at left, Dec 1 sts at right.

R177:K34.

Rows 178-179: As row 177 (without the shaping).

When knitting the next row: Dec 1 sts at left, Dec 1 sts at right.

R180:K32.

R181:As row 180 (without the shaping).

When knitting the next row: Dec 1 sts at left, Dec 1 sts at right.

R182:K30.

R183:As row 182 (without the shaping).

When knitting the next row: Dec 1 sts at left, Dec 1 sts at right.

R184:K28.

R185:As row 184 (without the shaping).

When knitting the next row: Dec 1 sts at left, Dec 1 sts at right.

R186:K26.

R187:As row 186 (without the shaping).

When knitting the next row: Dec 1 sts at left, Dec 1 sts at right.

R188:K24.

R189:As row 188 (without the shaping).

When knitting the next row: Dec 1 sts at left, Dec 1 sts at right.

R190:K22.

R191:As row 190 (without the shaping).

Cast off remainder. End of piece.

HORIZONTALLY RIBBED NECKBAND:

RIB SECTION	DIMENSIONS	INSTRUCTION
LEFT SIDE	39.0 x 3.0	Pick up 105 stitches + knit 14 rows welt.
LEFT FRONT NECK	8.8 x 3.0	Pick up 24 stitches + knit 14 rows welt.
BACK NECK	12.4 x 3.0	Pick up 34 stitches + knit 14 rows welt.
RIGHT FRONT NECK	8.8 x 3.0	Pick up 23 stitches + knit 14 rows welt.
RIGHT SIDE	39.0 x 3.0	Pick up 106 stitches + knit 14 rows welt.
TOTALS	===== 108.0	===== 292

***For mock-rib remember to duplicate the numbers of rows to knit for welt.**